



**Noise Monitoring Result**

**Day Time (0700 - 1900hrs on normal weekdays)**

Location: M1a - Harbour Road Sports Centre

Date	Time	Weather	Measurement Noise Level			Baseline Level	Construction Noise Level	Limit Level
			Leq	L10	L90	Leq	Leq	Leq
Unit: dB(A), (30-min)								
29/11/2016	10:12	Cloudy	74.3	75.5	72.0	72	70	75
5/12/2016	11:20	Fine	74.7	78.0	68.5	72	71	75
13/12/2016	13:00	Fine	74.3	76.0	71.5	72	70	75
20/12/2016	13:25	Fine	75.0	76.5	73.0	72	72	75

Location: M2b - Noon-day gun area

Date	Time	Weather	Measurement Noise Level			Baseline Level	Construction Noise Level	Limit Level
			Leq	L10	L90	Leq	Leq	Leq
Unit: dB(A), (30-min)								
29/11/2016	10:54	Cloudy	67.2	68.5	65.0	68	67	75
5/12/2016	13:00	Fine	68.3	69.5	65.5	68	60	75
13/12/2016	14:01	Fine	66.0	67.0	65.5	68	66	75
20/12/2016	14:14	Fine	68.3	70.0	65.5	68	60	75

Location: M3a - Tung Lo Wan Fire Station

Date	Time	Weather	Measurement Noise Level			Baseline Level	Construction Noise Level	Limit Level
			Leq	L10	L90	Leq	Leq	Leq
Unit: dB(A), (30-min)								
29/11/2016	11:30	Cloudy	66.0	67.0	64.0	69	66	75
5/12/2016	13:50	Fine	65.1	66.5	62.5	69	65	75
13/12/2016	08:00	Fine	64.0	65.0	62.5	69	64	75
20/12/2016	08:00	Fine	65.0	66.5	64.0	69	65	75

Location: M4b - Victoria Centre

Date	Time	Weather	Measurement Noise Level			Baseline Noise Level	Construction Noise Level	Limit Level
			Leq	L10	L90	Leq	Leq	Leq
Unit: dB(A), (30min)								
29/11/2016	13:13	Cloudy	68.0	70.5	63.0	67	60	75
5/12/2016	14:35	Fine	63.9	65.0	61.5	67	64	75
13/12/2016	08:40	Fine	65.0	66.5	62.0	67	65	75
20/12/2016	08:40	Fine	66.0	67.0	64.5	67	66	75

Location: M5b - City Garden

Date	Time	Weather	Measurement Noise Level			Baseline Level	Construction Noise Level	Limit Level
			Leq	L10	L90	Leq	Leq	Leq
Unit: dB(A), (30min)								
29/11/2016	13:57	Cloudy	68.9	71.0	65.5	68	62	75
9/12/2016	08:30	Fine	67.0	68.9	65.4	68	67	75
13/12/2016	09:25	Fine	67.0	69.5	66.5	68	67	75
20/12/2016	09:30	Fine	69.0	70.5	67.0	68	62	75

Location: M6 - HK Baptist Church Henrietta Secondary School

Date	Time	Weather	Measurement Noise Level			Baseline Level	Construction Noise Level	Limit Level
			Leq	L10	L90	Leq	Leq	Leq
Unit: dB(A), (30-min)								
29/11/2016	14:35	Cloudy	71.0	73.0	67.0	71	59	70
9/12/2016	09:58	Fine	71.4	74.0	65.5	71	63	65
13/12/2016	10:05	Fine	67.5	68.5	66.0	71	68	65
20/12/2016	10:15	Fine	67.5	68.0	66.0	71	68	65



### Noise Monitoring Result

#### Day Time (0700 - 1900hrs on normal weekdays)

Location: M7e - International Finance Centre (Eastern End of Podium) (Reference Station)

Date	Time	Weather	Measurement Noise Level			Baseline Level	Construction Noise Level	Limit Level
			Leq	L10	L90	Leq	Leq	Leq
Unit: dB(A), (30-min)								
29/11/2016	08:00	Cloudy	64.0	65.0	62.5	67	64	N/A
5/12/2016	09:00	Fine	63.0	65.5	61.5	67	63	N/A
14/12/2016	08:30	Fine	63.0	65.0	62.0	67	63	N/A
22/12/2016	08:30	Fine	66.0	67.5	64.5	67	66	N/A

Location: M7w - International Finance Centre (Western End of Podium)

Date	Time	Weather	Measurement Noise Level			Baseline Level	Construction Noise Level	Limit Level
			Leq	L10	L90	Leq	Leq	Leq
Unit: dB(A), (30-min)								
29/11/2016	08:35	Cloudy	61.0	63.0	59.0	69	61	75
5/12/2016	09:35	Fine	62.0	63.0	61.0	69	62	75
14/12/2016	09:10	Fine	61.0	62.0	60.5	69	61	75
22/12/2016	09:15	Fine	64.5	65.0	63.5	69	65	75

Location: M8 - City Hall

Date	Time	Weather	Measurement Noise Level			Baseline Level	Construction Noise Level	Limit Level
			Leq	L10	L90	Leq	Leq	Leq
Unit: dB(A), (30-min)								
29/11/2016	09:15	Cloudy	58.0	60.0	57.0	64	58	70
5/12/2016	10:20	Fine	60.2	67.0	56.5	64	60	70
14/12/2016	10:00	Fine	60.0	62.5	58.5	64	60	70
20/12/2016	15:14	Fine	69.0	71.0	61.5	64	67	70



**Noise Monitoring Result**

**Day Time (0700 - 1900hrs on normal weekdays)**

Location: M1a - Harbour Road Sports Centre

Date	Time	Weather	Measurement Noise Level			Baseline Level	Construction Noise Level	Limit Level
			Leq	L10	L90	Leq	Leq	Leq
Unit: dB(A), (30-min)								
28/12/2016	14:04	Fine	75.8	77.5	73.5	72	73	75
3/1/2017	15:55	Fine	74.3	76.5	71.0	72	70	75
10/1/2017	13:00	Fine	70.0	71.5	68.5	72	70	75
19/1/2017	13:37	Fine	74.6	76.5	71.5	72	71	75
23/1/2017	11:00	Fine	74.3	76.0	70.5	72	70	75

Location: M2b - Noon-day gun area

Date	Time	Weather	Measurement Noise Level			Baseline Level	Construction Noise Level	Limit Level
			Leq	L10	L90	Leq	Leq	Leq
Unit: dB(A), (30-min)								
28/12/2016	15:00	Fine	67.0	68.0	64.5	68	67	75
3/1/2017	16:38	Fine	67.2	68.5	65.0	68	67	75
10/1/2017	14:00	Fine	67.1	68.5	65.0	68	67	75
19/1/2017	14:26	Fine	67.7	69.0	65.5	68	51	75
23/1/2017	10:10	Fine	69.2	71.5	66.0	68	64	75

Location: M3a - Tung Lo Wan Fire Station

Date	Time	Weather	Measurement Noise Level			Baseline Level	Construction Noise Level	Limit Level
			Leq	L10	L90	Leq	Leq	Leq
Unit: dB(A), (30-min)								
29/12/2016	14:05	Fine	66.1	67.5	63.5	69	66	75
3/1/2017	13:00	Fine	64.3	66.0	61.5	69	64	75
10/1/2017	14:45	Fine	65.9	67.0	64.0	69	66	75
18/1/2017	13:00	Cloudy	67.0	68.5	65.5	69	67	75
24/1/2017	08:10	Fine	67.0	68.0	66.0	69	67	75

Location: M4b - Victoria Centre

Date	Time	Weather	Measurement Noise Level			Baseline Noise Level	Construction Noise Level	Limit Level
			Leq	L10	L90	Leq	Leq	Leq
Unit: dB(A), (30min)								
29/12/2016	14:45	Fine	65.7	67.5	61.5	67	66	75
3/1/2017	13:40	Fine	64.2	66.5	61.5	67	64	75
10/1/2017	15:25	Fine	66.3	68.5	63.0	67	66	75
18/1/2017	13:40	Cloudy	64.9	66.0	62.5	67	65	75
24/1/2017	09:00	Fine	65.0	66.5	63.5	67	65	75

Location: M5b - City Garden

Date	Time	Weather	Measurement Noise Level			Baseline Level	Construction Noise Level	Limit Level
			Leq	L10	L90	Leq	Leq	Leq
Unit: dB(A), (30min)								
29/12/2016	15:25	Fine	69.6	71.5	66.0	68	64	75
3/1/2017	14:26	Fine	68.0	68.5	64.0	68	68	75
10/1/2017	16:10	Fine	68.0	69.5	65.0	68	68	75
18/1/2017	14:21	Cloudy	66.1	67.5	64.0	68	66	75
24/1/2017	09:48	Fine	67.8	68.5	65.0	68	68	75

Location: M6 - HK Baptist Church Henrietta Secondary School

Date	Time	Weather	Measurement Noise Level			Baseline Level	Construction Noise Level	Limit Level
			Leq	L10	L90	Leq	Leq	Leq
Unit: dB(A), (30-min)								
29/12/2016	16:05	Fine	67.4	68.5	65.5	71	67	70
3/1/2017	15:02	Fine	67.6	68.5	66.0	71	68	70
10/1/2017	16:50	Fine	66.9	68.0	65.5	71	67	70
18/1/2017	15:00	Cloudy	66.3	68.0	63.5	71	66	70
24/1/2017	10:25	Fine	68.0	69.0	65.5	71	68	65



**Noise Monitoring Result**

**Day Time (0700 - 1900hrs on normal weekdays)**

Location: M7e - International Finance Centre (Eastern End of Podium) (Reference Station)

Date	Time	Weather	Measurement Noise Level			Baseline Level	Construction Noise Level	Limit Level
			Leq	L10	L90	Leq	Leq	Leq
Unit: dB(A), (30-min)								
29/12/2016	08:30	Fine	64.0	65.0	63.0	67	64	N/A
6/1/2017	08:00	Fine	65.0	66.0	62.0	67	65	N/A
10/1/2017	08:30	Fine	66.0	67.0	65.5	67	66	N/A
16/1/2017	08:35	Cloudy	66.5	67.0	65.0	67	67	N/A
27/1/2017	08:30	Fine	64.0	65.5	63.0	67	64	N/A

Location: M7w - International Finance Centre (Western End of Podium)

Date	Time	Weather	Measurement Noise Level			Baseline Level	Construction Noise Level	Limit Level
			Leq	L10	L90	Leq	Leq	Leq
Unit: dB(A), (30-min)								
29/12/2016	09:35	Fine	63.0	64.5	61.5	69	63	75
6/1/2017	08:35	Fine	63.0	64.5	62.0	69	63	75
10/1/2017	09:30	Fine	65.0	66.0	63.0	69	65	75
16/1/2017	09:45	Cloudy	64.0	65.0	63.5	69	64	75
27/1/2017	09:35	Fine	65.0	65.5	63.5	69	65	75

Location: M8 - City Hall

Date	Time	Weather	Measurement Noise Level			Baseline Level	Construction Noise Level	Limit Level
			Leq	L10	L90	Leq	Leq	Leq
Unit: dB(A), (30-min)								
29/12/2016	10:30	Fine	68.5	70.0	67.0	64	67	70
6/1/2017	09:20	Fine	67.5	68.5	66.0	64	65	70
10/1/2017	10:35	Fine	68.0	69.0	66.5	64	66	70
16/1/2017	10:50	Cloudy	69.0	70.5	67.5	64	67	70
27/1/2017	10:35	Fine	67.0	68.0	66.5	64	64	70



**Noise Monitoring Result**

**Day Time (0700 - 1900hrs on normal weekdays)**

Location: M1a - Harbour Road Sports Centre

Date	Time	Weather	Measurement Noise Level			Baseline Level	Construction Noise Level	Limit Level
			Leq	L10	L90	Leq	Leq	Leq
Unit: dB(A), (30-min)								
1/2/2017	13:00	Fine	69.0	72.5	67.5	72	69	75
9/2/2017	10:00	Fine	75.8	77.0	71.5	72	73	75
16/2/2017	09:50	Fine	76.8	80.0	71.5	72	75	75
21/2/2017	15:09	Cloudy	73.5	75.5	69.0	72	68	75

Location: M2b - Noon-day gun area

Date	Time	Weather	Measurement Noise Level			Baseline Level	Construction Noise Level	Limit Level
			Leq	L10	L90	Leq	Leq	Leq
Unit: dB(A), (30-min)								
1/2/2017	13:50	Fine	66.9	67.5	63.5	68	67	75
9/2/2017	10:45	Fine	67.7	69.0	65.5	68	51	75
15/2/2017	09:51	Fine	67.5	69.0	65.5	68	68	75
21/2/2017	14:20	Cloudy	67.1	68.5	65.0	68	67	75

Location: M3a - Tung Lo Wan Fire Station

Date	Time	Weather	Measurement Noise Level			Baseline Level	Construction Noise Level	Limit Level
			Leq	L10	L90	Leq	Leq	Leq
Unit: dB(A), (30-min)								
1/2/2017	14:30	Fine	64.9	66.5	62.0	69	65	75
9/2/2017	11:25	Fine	66.3	67.0	64.5	69	66	75
16/2/2017	10:31	Fine	64.5	66.0	62.5	69	65	75
21/2/2017	13:00	Cloudy	66.0	67.0	64.5	69	66	75

Location: M4b - Victoria Centre

Date	Time	Weather	Measurement Noise Level			Baseline Noise Level	Construction Noise Level	Limit Level
			Leq	L10	L90	Leq	Leq	Leq
Unit: dB(A), (30min)								
1/2/2017	15:10	Fine	63.4	64.5	60.5	67	63	75
9/2/2017	13:30	Fine	64.9	66.5	62.0	67	65	75
16/2/2017	11:08	Fine	66.8	68.5	64.5	67	67	75
21/2/2017	13:37	Cloudy	64.7	66.0	62.0	67	65	75

Location: M5b - City Garden

Date	Time	Weather	Measurement Noise Level			Baseline Level	Construction Noise Level	Limit Level
			Leq	L10	L90	Leq	Leq	Leq
Unit: dB(A), (30min)								
1/2/2017	15:50	Fine	65.8	67.5	62.5	68	66	75
7/2/2017	08:05	Fine	68.0	69.5	67.0	68	68	75
15/2/2017	10:55	Fine	67.1	68.5	65.0	68	67	75
21/2/2017	10:20	Cloudy	71.0	74.0	70.2	68	68	75

Location: M6 - HK Baptist Church Henrietta Secondary School

Date	Time	Weather	Measurement Noise Level			Baseline Level	Construction Noise Level	Limit Level
			Leq	L10	L90	Leq	Leq	Leq
Unit: dB(A), (30-min)								
1/2/2017	16:26	Fine	67.1	68.5	65.0	71	67	70
7/2/2017	08:45	Fine	68.5	69.0	67.5	71	69	65
13/2/2017	10:55	Fine	68.4	69.5	66.5	71	68	65
21/2/2017	10:57	Cloudy	68.5	69.0	66.5	71	69	65



**Noise Monitoring Result**

**Day Time (0700 - 1900hrs on normal weekdays)**

Location: M7e - International Finance Centre (Eastern End of Podium) (Reference Station)

Date	Time	Weather	Measurement Noise Level			Baseline Level	Construction Noise Level	Limit Level
			Leq	L10	L90	Leq	Leq	Leq
Unit: dB(A), (30-min)								
2/2/2017	08:30	Fine	66.0	67.0	64.5	67	66	N/A
8/2/2017	08:30	Fine	68.0	69.0	66.5	67	62	N/A
17/2/2017	09:44	Fine	66.8	68.5	62.5	67	67	N/A
20/2/2017	08:30	Fine	66.5	68.5	65.0	67	67	N/A

Location: M7w - International Finance Centre (Western End of Podium)

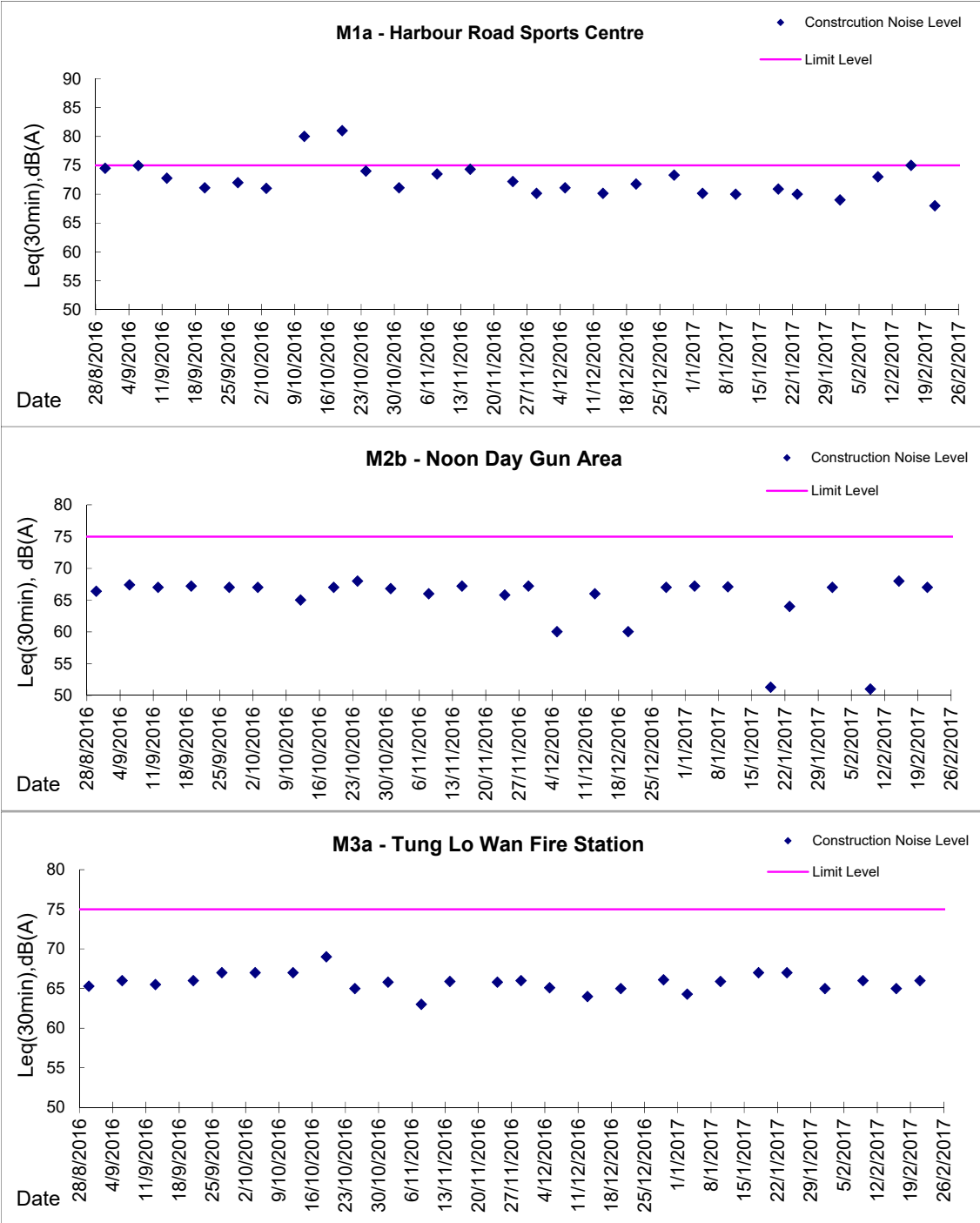
Date	Time	Weather	Measurement Noise Level			Baseline Level	Construction Noise Level	Limit Level
			Leq	L10	L90	Leq	Leq	Leq
Unit: dB(A), (30-min)								
2/2/2017	09:35	Fine	65.0	66.0	63.0	69	65	75
8/2/2017	09:35	Fine	66.0	67.0	65.0	69	66	75
17/2/2017	10:19	Fine	66.8	68.5	63.0	69	67	75
20/2/2017	09:30	Fine	65.5	68.0	64.5	69	66	75

Location: M8 - City Hall

Date	Time	Weather	Measurement Noise Level			Baseline Level	Construction Noise Level	Limit Level
			Leq	L10	L90	Leq	Leq	Leq
Unit: dB(A), (30-min)								
2/2/2017	10:35	Fine	68.0	69.5	67.5	64	66	70
8/2/2017	10:35	Fine	69.0	70.0	67.5	64	67	70
17/2/2017	11:00	Fine	64.8	65.7	56.0	64	57	70
20/2/2017	10:30	Fine	64.5	65.0	63.0	64	55	70

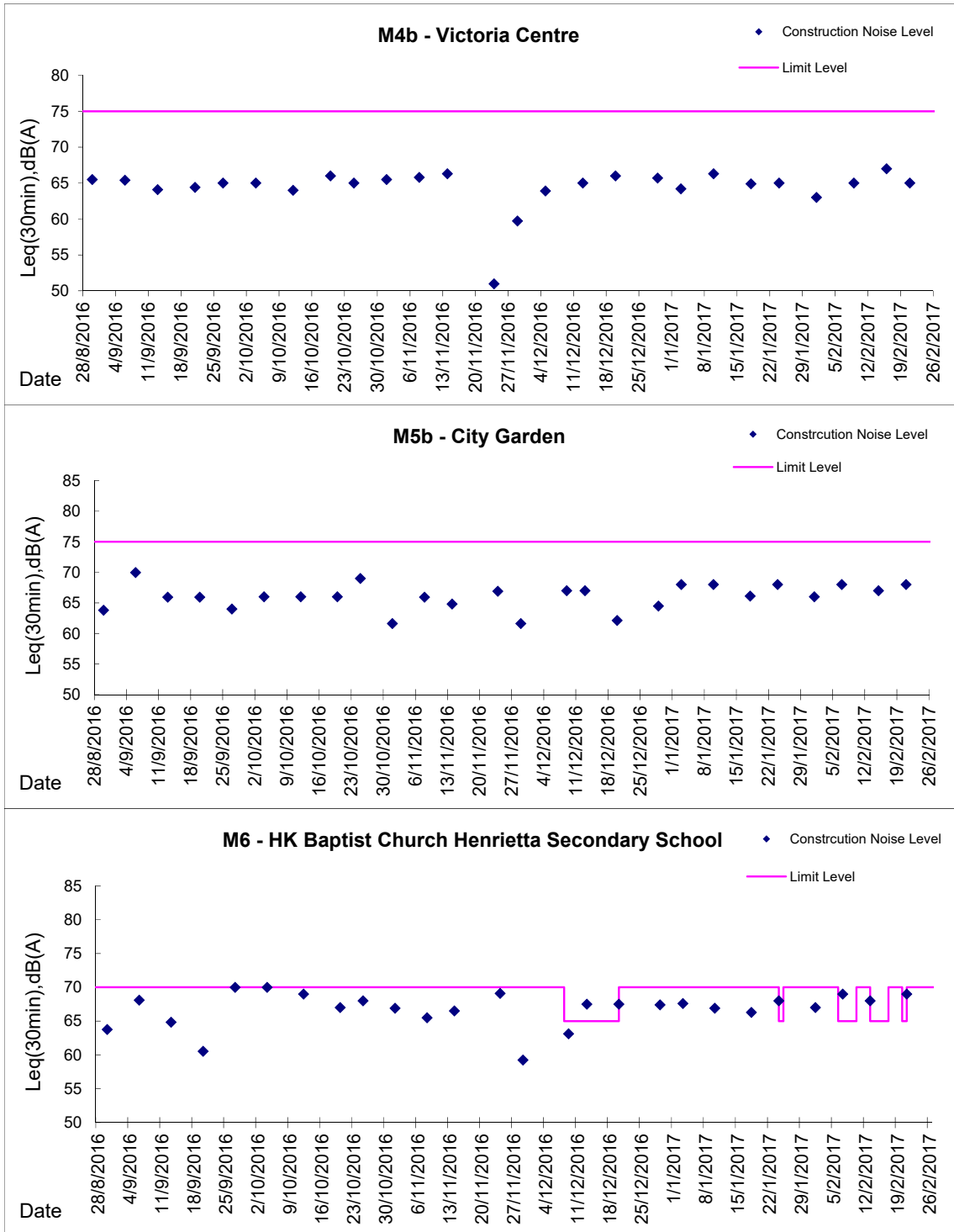
**Graphic Presentation of Noise Monitoring Result**

**Day Time (0700 - 1900hrs on normal weekdays)**



**Graphic Presentation of Noise Monitoring Result**

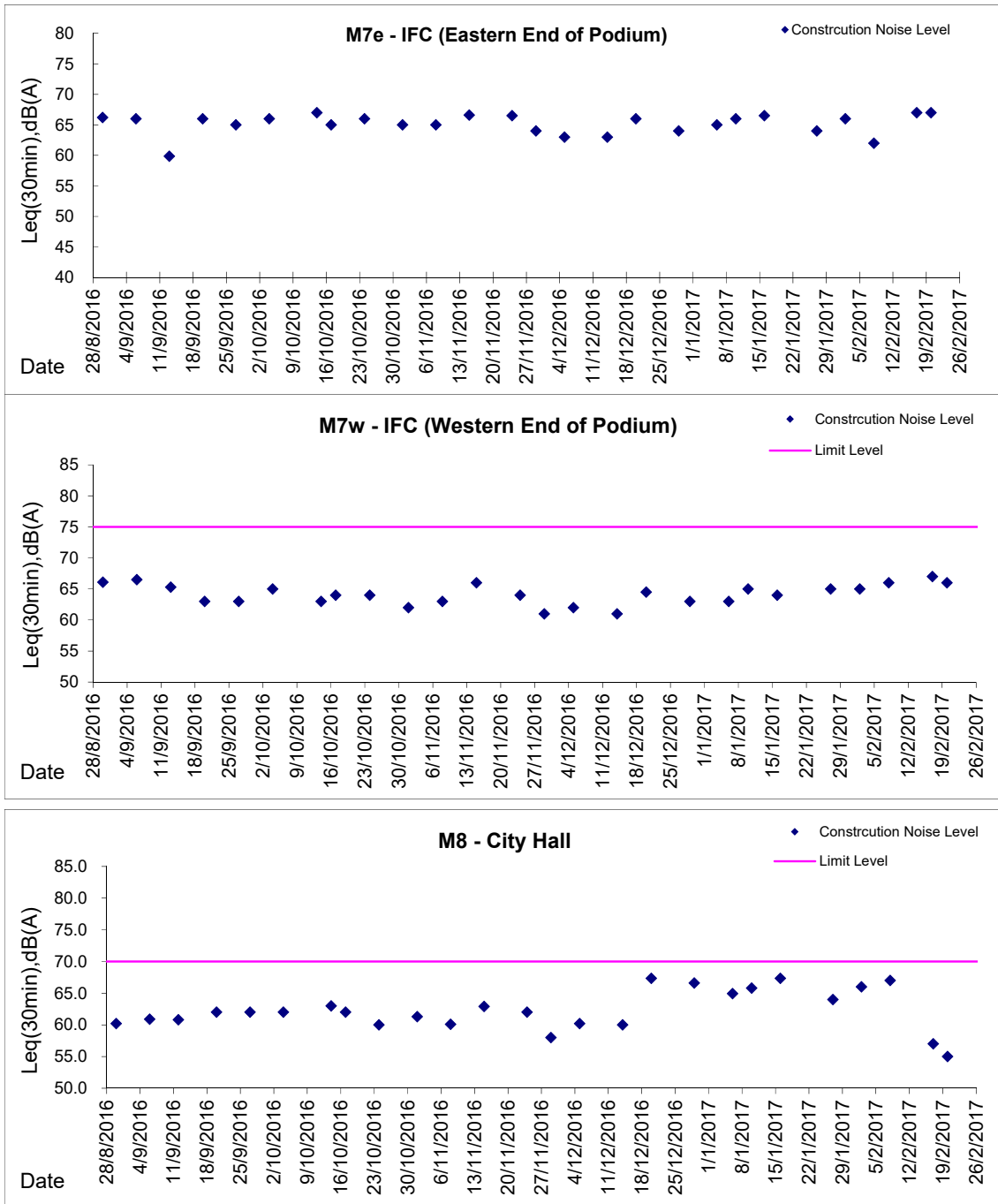
**Day Time (0700 - 1900hrs on normal weekdays)**





**Graphic Presentation of Noise Monitoring Result**

**Day Time (0700 - 1900hrs on normal weekdays)**



\* Remark: M7e - IFC (Eastern End of Podium) is a reference monitoring station